



"AUTOSPIN" METAL CASED SEALS MANUFACTURED TO ANY SIZE REQUIRED – FAST

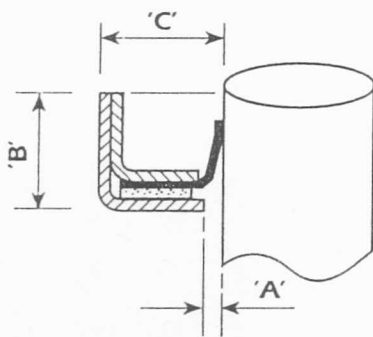
HIGH PRESSURE PTFE SEALS

- Pressures up to 25 bars
- Vacuum 0.1 torr.
- Temperature - 90°C to + 250°C
- Sealing surface speeds up to 45m/sec

- PV-value 45 bars m/sec
- Dry running capability

Seals also available in multi lip designs.
For further information please consult our technical department.

STYLE HP 1



STANDARD SEAL DESIGN

Size range from 30mm Ø/dia. to 530 Ø/dia.

Pressure up to 5 bar.

Dimension 'A' = 0.5mm

Dimension 'B' = 6mm minimum

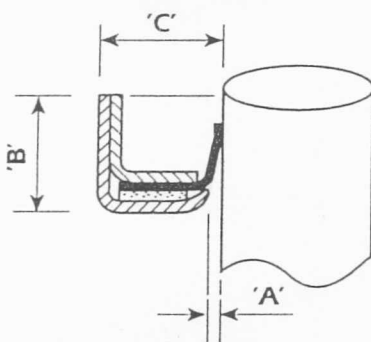
Dimension 'C' = 7mm minimum

Metal parts = Stainless steel (BS1449 Pt2 1983/ANSI 1316)

Sealing element = Black PTFE

Captive Elastomer = VITON (up to 250°C)

STYLE HP 2



SPECIAL SEAL DESIGN

Size range from 30mm Ø/dia. to 530 Ø/dia.

Pressure up to 10 bar.

Dimension 'A' = 0.2mm

Dimension 'B' = 6mm minimum

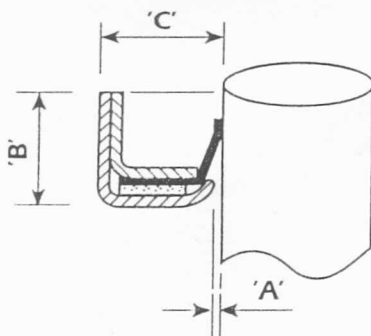
Dimension 'C' = 7mm minimum

Metal parts = Stainless steel (BS1449 Pt2 1983/ANSI 1316)

Sealing element = Black PTFE

Captive Elastomer = VITON (up to 250°C)

STYLE HP 3



SPECIAL SEAL DESIGN

Size range from 46mm Ø/dia. to 530 Ø/dia.

Pressure up to 25 bar.

Dimension 'A' = 0.1mm

Dimension 'B' = 6mm minimum

Dimension 'C' = 8mm minimum

Metal parts = Stainless steel (BS1449 Pt2 1983/ANSI 1316)

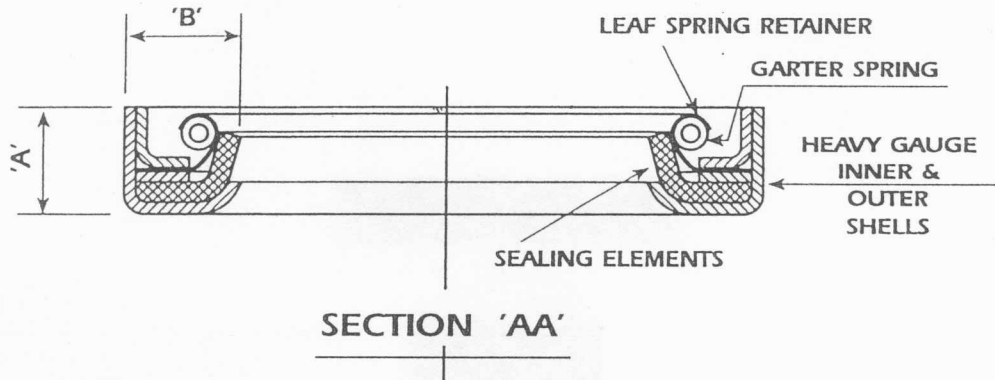
Sealing element = Black PTFE

Captive Elastomer = VITON (up to 250°C)

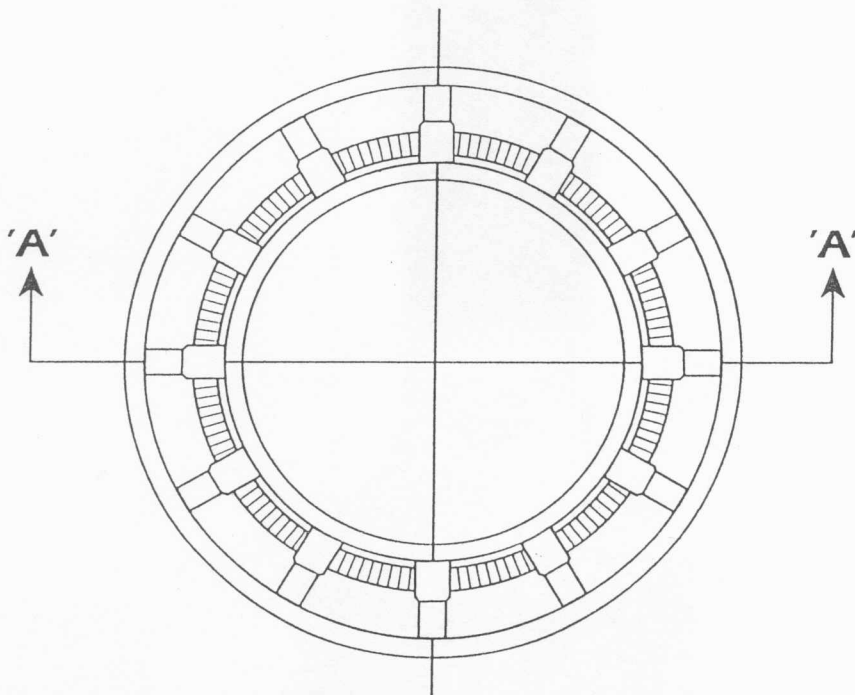
P.T.F.E. Element is supported by metal outer case



LEAF SPRING RETAINER SEALS



- Size range from 150mm Ø/dia. to 1358mm Ø/dia. With standard nitrile or viton sealing elements.
- Size range from 150mm Ø/dia. to 1358mm Ø/dia. With standard silicone sealing elements.
- Dimensions 'A' and 'B' = 16mm minimum
- Pressure up to 10 bar. Maximum shaft misalignment = 2/3mm dependent on shaft speed.
- Temperature: Nitrile - 54°C to + 120°C. Viton - 15°C to + 250°C. Silicone - 60°C to + 200°C.



METAL MATERIALS

Outer/inner shell and base washer = Mild steel as standard.

Garter Spring = Galvanised steel as standard.

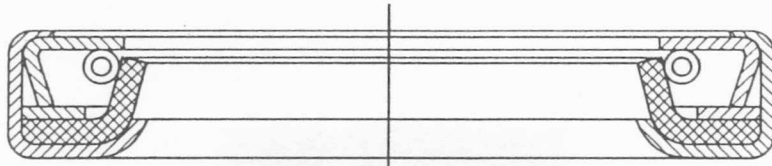
Leaf spring retainer = Stainless steel (ANSI 301 S21) as standard.

Also available in non-ferrous metals.

VITON is the Registered Trade Mark of E.I. Dupont De Nemours Inc., Delaware, USA.

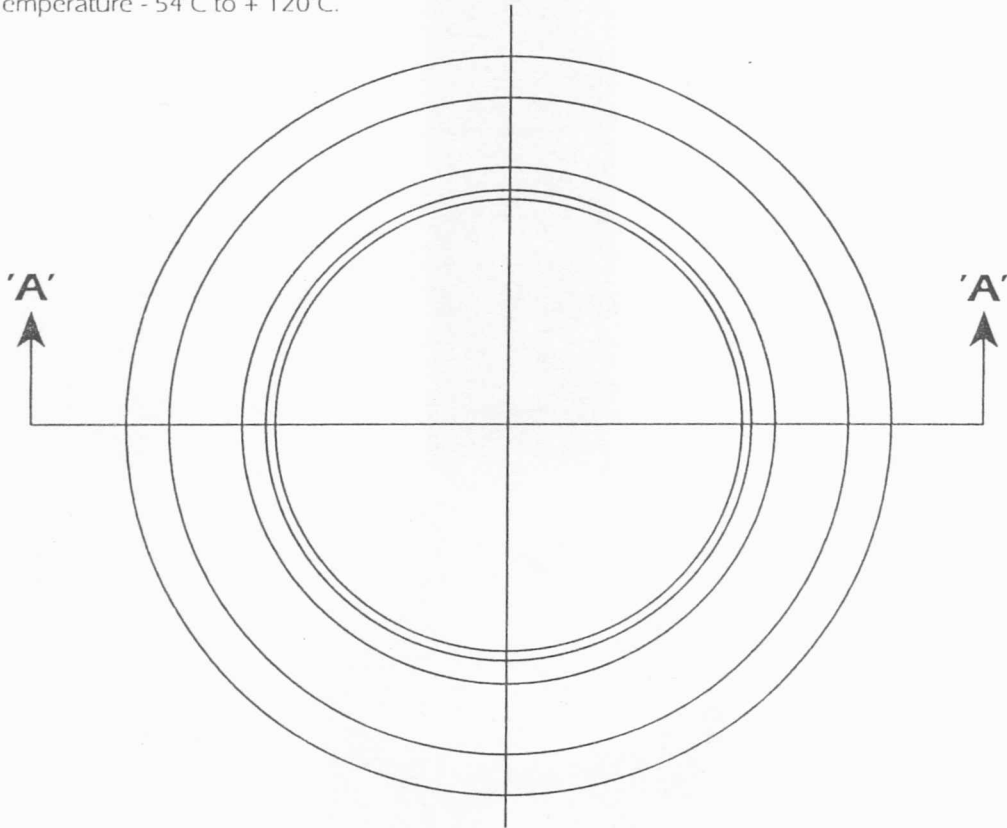


STANDARD NITRILE RUBBER SEAL



SECTION 'AA'

- Size range from 50mm O/dia. to 1358mm O/dia.
- Pressure up to 10 bar. Shaft speed up to 15 m/s. Shaft to HSG. Bore misalignment = .005"
- Temperature - 54°C to + 120°C.



METAL MATERIALS

Outer/inner shell and base washer = Mild steel as standard.

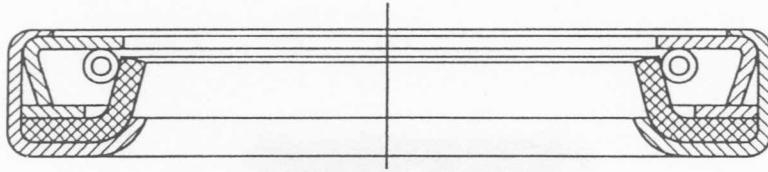
Garter Spring = Galvanised steel as standard.

Also available in non ferrous metals.

For multi-lip designs please consult our Technical Department.



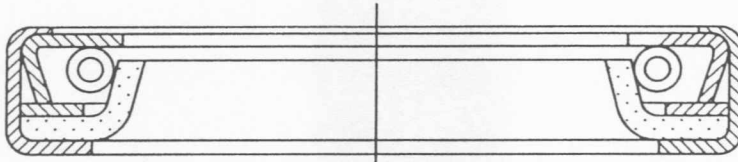
STANDARD VITON RUBBER SEAL



SECTION 'AA'

- Size range from 50mm Ø/dia. to 1358mm Ø/dia.
- Pressure up to 10 bar. Maximum shaft speed 15 m/s. Shaft to HSG. Bore misalignment = .005"
- Temperature - 40°C to + 250°C.

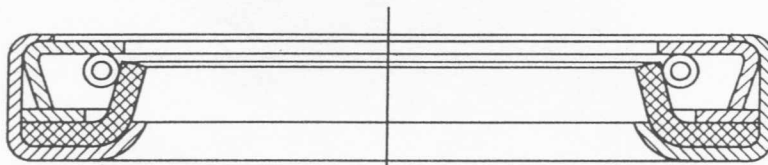
STANDARD LEATHER OIL SEAL



SECTION 'AA'

- Size range from 36mm Ø/dia. to 1220mm Ø/dia.
- Pressure up to 3 bar. Maximum shaft speed up to 10 m/s. Shaft to HSG. Bore misalignment = .005"
- Temperature - 30°C to + 90°C.

STANDARD SILICONE RUBBER SEAL

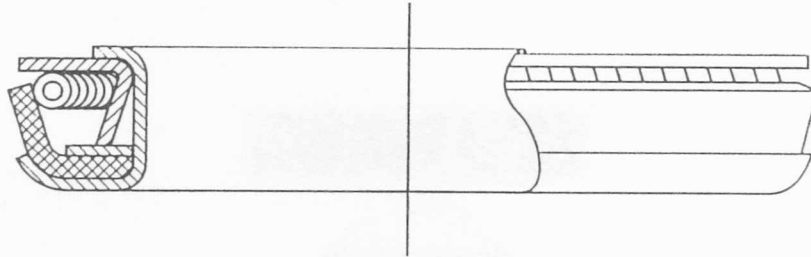


SECTION 'AA'

- Size range from 50mm Ø/dia. to 1358mm Ø/dia.
- Pressure up to 10 bar. Maximum shaft speed up to 15 m/s. Shaft to HSG. Bore misalignment = .005"
- Temperature - 70°C to + 200°C.

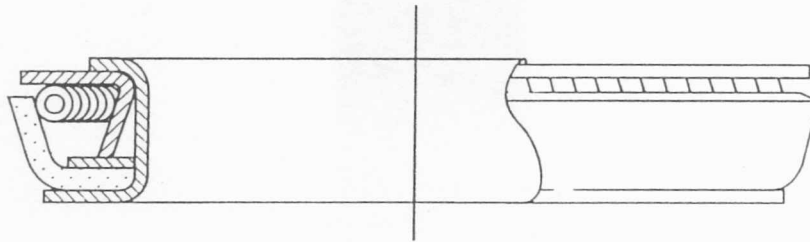


EXTERNAL SEALS



STANDARD EXTERNAL SEAL

- Size range from 50mm Cyl./dia. to 1320mm Cyl./dia. with standard nitrile or viton sealing elements.
- Size range from 50mm Cyl./dia. to 920mm Cyl./dia. with standard silicone sealing elements.
- Pressure up to 3 bar. Maximum cycl. speed 15 m/s. Shaft to cyl. Bore misalignment = .005"
- Temperature: Nitrile - 54°C to + 120°C. Viton - 15°C to + 250°C.
Silicone - 70°C to + 200°C. P.T.F.E. - 90°C to + 300°C.



STANDARD LEATHER EXTERNAL SEAL

- Size range from 38mm Cyl./dia. to 1020mm Cyl./dia.
- Pressure up to 1.5 bar. Maximum cycl. speed 10 m/s. Shaft to cyl. Bore misalignment = .003"
- Temperature - 30°C to + 90°C.

METAL MATERIALS

Outer/inner shell and base washer = Mild steel as standard.

Garter Spring = Galvanised steel as standard.

Also available in non ferrous metals.